



# London 2023-2024

Final Meeting

December 12, 2023

# QUESTIONS

- WRITE YOUR QUESTION DOWN
- WAIT TO THE END TO ASK
- THIS SLIDE SHOW WILL BE POSTED ON THE BAND WEBSITE AND ON THE LONDON APP
- TAKE PICTURES OF THE SLIDES IF NECESSARY
- HOLD ALL QUESTIONS UNTIL THE END OF THE PRESENTATION!





---

## In this Meeting

- Day by Day instructions updated itinerary
- FAQs
- Money
- Weather
- Travel information
- Assigned chaperone groups and their purpose
- Tour Bus Lists
- Code of conduct
- <https://www.universityhsband.com/london-2023-2024>



# December 27<sup>th</sup>

- Everyone Arrive to Orlando International Airport.
  - Please arrive by 1:30pm...**NO later!!!**
  - **TRANSPORTATION NOT PROVIDED!!!!**
- Mrs. Dally's and Mr. and Mrs. Munet's plane
  - American Airlines 2116 to Philadelphia departs at 5:27pm arrives in Philly at 7:54pm
  - American Airlines 0728 to Heathrow airport departs at 9:20pm arrives 9:20am In London
- Mr. K's plane
  - British Airways 2036 Departs Orlando at 6:25pm arrives at Gatwick airport at 7:30am



December  
27<sup>th</sup>  
continued

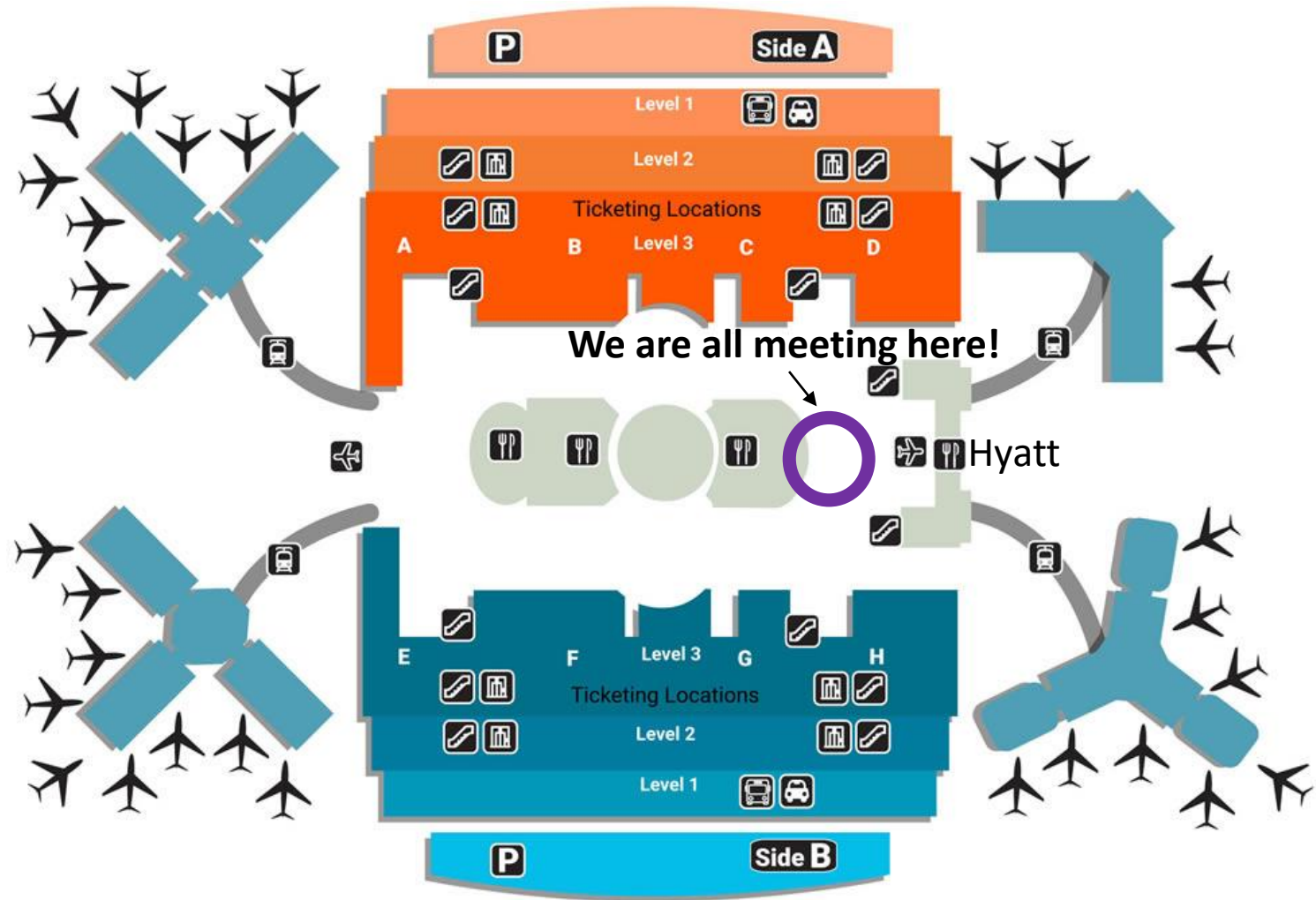
### Luggage

1 carry on (flutes and clarinets inside carry on)  
1 personal bag (purse, etc)  
1 checked bag  
50lb limit for checked bag, and up to 35.5 x 29.5 x 16 in.

### Arriving to airport

All students must wear grey hoodie sweatshirt in airport and on plane  
Check in with your Primary chaperone  
Do not check your luggage at curb...bring with you and check in at the counter with your group

Location of  
Check in  
Level 3





# Airport Procedures



Students must check in with their assigned Primary Chaperone and STAY with that chaperone. Their family members can stay with that group as well.



Entire Chaperone Group will move to ticketing counter to drop off luggage.



Entire Chaperone Group will then head through security



Entire Chaperone Group will then head to Terminal and Wait with the group for boarding.

# AIRPORT PROCEDURES

- Ensure you do not leave home without your passport.
- No ticket required.
- Check-in your suitcase.
- Seats pre allocated by chaperone group and family
- Travel as a group through airport security.
- All liquids and gels must be put in plastic bags (4 fl.oz. per item).







### **When it comes time to check your luggage**

Go with your group

You **must** Have your passport...do not loose it...hold on to it until you arrive in LONDON.

After you get on the coach to go to the hotel your passport will be collected by your chaperone.



### **When you go through security check point...do not leave the area or you will have to go through check point all over again!**

Stay with your chaperone group while in airport...yes even if your parents are traveling with you. Parents-travel with and assist the lead chaperone!

assigned lead chaperone are responsible for the students getting through the airport safely.



### **Food will be served on the plane.**

Allergy and food sensitivities have been given to the airlines...but please double check!

# December 27<sup>th</sup> continued

# Our Assigned Tour Assistant



# December 28<sup>th</sup>

Thursday 28 <sup>th</sup> December	7.30am	147 passengers on the BA2036 arrive into London Gatwick South Terminal
	9.20am	<p>36 passengers on the AA0728 arrive into London Heathrow Terminal 3.</p> <p>Our special team of meet &amp; greet staff will assist you in the arrivals hall.</p> <p>Load luggage and board the waiting coach (bus) and depart for your hotel.</p> <p>Your 1 'land only' passengers will make their own way to the hotel.</p> <p>ORIENTATION MEETING. Your tour assistant will inform you of the time for the meeting where you will receive a welcome pack, including your itinerary book.</p> <p>BAND EQUIPMENT. Your tour assistant will hand you the key to your band equipment storage room. You may wish to check everything is in good order.</p> <p>Optional activity. At the first opportunity this afternoon, depart by underground, using your Oyster Card, to Green Park Station on the Jubilee, Piccadilly and Victoria Lines and exit on to Piccadilly.</p> <p>Walk to Berkeley Square, the starting point for the first of the wonderful AUDIO WALKS that are included in your programme. The PARADE ROUTE audio walk - from the Ritz to Parliament Square, London's history packed parade route.</p> <p>Walk to Westminster Station and return by underground to your hotel.</p>
	7.00pm	<p>Dinner is served in the Garden Suite in your HOTEL.</p> <p>It is served later tonight to allow you more time for your afternoon activity.</p> <p>We do recommend that your students not go to bed until at least 9.00pm to help them acclimatise to London time. A private room will be available in your hotel if you wish to hold a meeting or just 'hang out'.</p>
	10pm	Bed Check

# Tour Bus Lists

## Bus 1

1. Mr. K	22. <b>Chaperone Debra Stroh</b>	43. Journie Thomas
2. Mrs. K	23. Gabriella Franco	44. Aybrie Mirino*
3. Mariah Francis	24. Daniella Edwards	45. <i>Savannah Wilson (NSP)</i>
4. Tim Kiesel	25. Maddi Watts	46. <i>Ely's Guzman (NSP)</i>
5. Ethan Avila	26. Shania Gill*	47. <i>Josh Toledo (NSP)</i>
6. Lexi Hardy	27. Dayanara Suarez	
7. Alan Greene	28. Giana Jaramillo	
8. <b>Chaperone Katrina Burch</b>	29. Victoria Oyarbide	
9. Cianna Boxberger	30. Gabriella Martinez*	
10. Lillian Logan	31. <b>Chaperone Emily Curtis</b>	
11. Liara Cabrera*	32. Kylie Gregg	
12. Emma Jansen*	33. Piper Cochran	
13. Izak Chairez	34. Hannah Shafer*	
14. Dakota Dewey	35. Sarah Pralat*	
15. <b>Chaperone Christina Bertrand©</b>	36. Benji Vialet	
16. Kayla Bertrand	37. Izzie Cowing*	
17. Ambreen Samuda	38. <b>Chaperone Kim Mackrodt</b>	
18. Ana Camila Ortiz	39. Mia Bravo	
19. Makayla Corbin	40. Abby Mackrodt	
20. Jayden Nieves	41. Nestor Rios	
21. Isaiah Coira-Ortiz	42. Charles Dieterle	

## Bus 2

1. <b>Chaperone Kyle Peters ©</b>	22. Ian Munet	44. <i>Parker Wadsen (NSP)</i>
2. Dakotah Peters	23. Yulian Suarez	45. <i>Jessica Isley (NSP)</i>
3. Kendra Wilkinson*	24. Collin Caudell	
4. Hayley Synowiec	25. Jaciel Cipriano	
5. Morgan Matheson*	26. Harrison Lint	
6. Angelo Hernandez	27. Jammi Zelaya	
7. Jacob Gavora*	28. <b>Chaperone Mr. Garrison</b>	
8. <b>Chaperone Renee Dally</b>	29. <b>Chaperone Mrs. Garrison</b>	
9. Shyann Dally	30. Tyler Garrison	
10. Lanalee Haddaway	31. Noah Reyes*	
11. Caleb Stone	32. Anderson Kuczynski*	
12. Joshua Smith*	33. Javan Taylor*	
13. <b>Chaperone Christopher Allen</b>	34. Israel Mullins	
14. Jasmine Foster*	35. <b>Chaperone Lisa Rubino</b>	
15. Ruby Spignardo	36. Austin Rubino	
16. William Troxler	37. Marco Gomez	
17. Alexander Viard	38. Reid Dapore*	
18. John Crow	39. Alexander Lugering	
19. <b>Chaperone Mr. Munet</b>	40. Max Carpenter*	
20. <b>Chaperone Mrs. Munet</b>	41. Michael Corbaley	
21. Lya Nai Munet	42. <i>Jordan Schoening (NSP)</i>	
	43. <i>Camren Lacapra (NSP)</i>	



# Tour Bus Lists Continued

## Bus 3

1. <b>Chaperone Christine Kearney</b>	21. Reid Smith	42. Cassie Shafer
2. Jaslyn Emery*	22. <b>Chaperone Staci Gotlib</b> ©	43. Heather Carpenter
3. Ryleigh Kearney	23. Daniel Gotlib	44. Chris Carpenter
4. Alan Paulino	24. Benji Gotlib	45. Kelly Murphy
5. Braden Reading	25. Alexander Williams*	46. Colleen Murphy
6. Julianna Garriss*	26. Oscar Zuniga	
7. Rylee Soto	27. Kella Page*	
8. <b>Chaperone Cynthia Bresnick</b>	28. Gemma Lockhart	
9. Nicholas Kowalzyk*	29. <i>Emma Gotlib (NSP)</i>	
10. Logan Darling	30. <i>Ben Howard (NSP)</i>	
11. Karissa Sibley*	31. <i>Paige Watts (NSP)</i>	
12. Sydney Begey*	32. <i>David Jimenez (NSP)</i>	
13. Ashton Dechiara	33. Marjorie Plitzko	
14. Liam Stroup	34. Steven Garriss	
15. <b>Chaperone Max Smith</b>	35. Orlenna Garriss	
16. Fisher Payne	36. Jason Matheson	
17. Patrick Allen*	37. Minda Matheson	
18. Sebastian Del Valle*	38. Francis Mirino	
19. Javon Sueing*	39. Rosemarie Mirino	
20. Jaydian Germann	40. Shawn Sibley	
	41. Gaylene Erickson	

## Bus 4

1. Lionel Cabrera	24. Olivia Del Valle	46. Melissa Michaels
2. Lionel Cabrera Jr	25. Leon Santroni	
3. Margarita Cabrera	26. Catherine Kowalzyk	
4. Joshua Page ©	27. Beverly Stewart	
5. Lillie Page	28. Matthew Kowalzyk	
6. Lisa Nadeau	29. Francisco Jimenez	
7. Phil Greco	30. Janessa Wilkinson	
8. Joanne Greco	31. Daniel Begey	
9. Toby Watts	32. Rebekah Rosario	
10. Peter Taylor	33. Jacqueline Smith	
11. Michelle Taylor	34. Jasmine Smith	
12. Joanne Bridgens	35. Kimble Smith	
13. Spencer Holgate	36. Katrina Smith	
14. David Ross	37. Jonathon Smith	
15. Stacey Oliver	38. Jamarion Brown	
16. Lashaedra Jones	39. Glenda Crow	
17. Makayla Reyes	40. Amy Adair	
18. Kristen Reyes	41. April Pralat	
19. Sunny Nequette	42. Sheila Garcia	
20. Gregory Williams	43. Stephanie Demar Gavora	
21. Maria Jimenez	44. Daisha Dominguez	
22. Billie Henson	45. Brenda Kuczynski	
23. Roosevelt Harrison		

# December 29<sup>th</sup>

Friday 29 <sup>th</sup> December	7.00am	A full English buffet breakfast will be served in the Garden Suite.
	9.00am	FULL DAY TOUR to HAMPTON COURT. Join your Blue Badge guide and coach and depart for Hampton Court, with a visit to the Royal Palace & Gardens. Lunch at leisure. There will be time to discover the palace for yourself.
	3.00pm	Re-join your coach and depart for London.
	4.00pm	Arrive back at your hotel.
	5.00pm	Begin a one hour REHEARSAL in the Gallery Suite Rehearsal ends.
	6.00pm	Dinner (DINE AROUND SCHEME) and evening at leisure. Return by underground to your hotel.
	10pm	Bed Check

# December 30<sup>th</sup>

Saturday 30 <sup>th</sup> December	6.45am	A full English buffet breakfast will be served in the Garden Suite.
	9.00am	HALF DAY TOUR OF LONDON. Join your Blue Badge guide and coach for a guided tour of visitors London. There will be a couple of photo stops.
	12.30pm	Tour ends in Covent Garden. Lunch at leisure.
	2.00pm	<b>Optional activity.</b> Walk to Embankment, the starting point of the <b>SOUTHBANK STROLL</b> audio walk. This walk will introduce you to the incredible and varied history of the south bank of the River Thames. Walk back to your hotel. Dinner ( <b>DINE AROUND SCHEME</b> ) and evening at leisure. Return by underground to your hotel.
	10pm	Bed Check

# December 31<sup>st</sup>

Sunday 31 <sup>st</sup> December	7.15am	A full English buffet breakfast will be served in the Garden Suite.
	9.00am	FULL DAY TOUR to WINDSOR. Join your Blue Badge guide and motor coach and depart for Windsor. Your guide will lead you on a walk of the town.
	12.30pm	Entrance to the royal castle. Lunch at leisure. There will be time to discover Windsor for yourself.
	4.00pm	Re-join your coach and return to London.
	6.30pm	Dinner served in the Garden Suite in your HOTEL.
	9.00pm	A NEW YEAR'S EVE PARTY begins in your hotel.
	10.30pm	Slices of pizza and soft drinks will be provided. Finish shortly after midnight. Bed Check!!!!!!



[This Photo](#) by Unknown Author is licensed under [CC BY-SA](#)



# January 1<sup>st</sup> Parade Performance Day for Titan Regiment

Monday 1 <sup>st</sup> January 2024	8.00am	A full English buffet breakfast will be served in the Garden Suite. Non performers will have a free morning and make their own way to the parade.
	10.10am	Band depart your hotel by coach for the assembly area in Berkeley Square.
	t.b.a.	The official group photograph. A sack lunch will be provided for all performers.
	Noon	LNYP 2024. March two miles down the most spectacular route in the world.
	t.b.a.	Return by coach to your hotel. Pack away your instruments as they will be collected in the morning. Dinner (DINE AROUND SCHEME) and evening at leisure.
	10pm	Bed Check



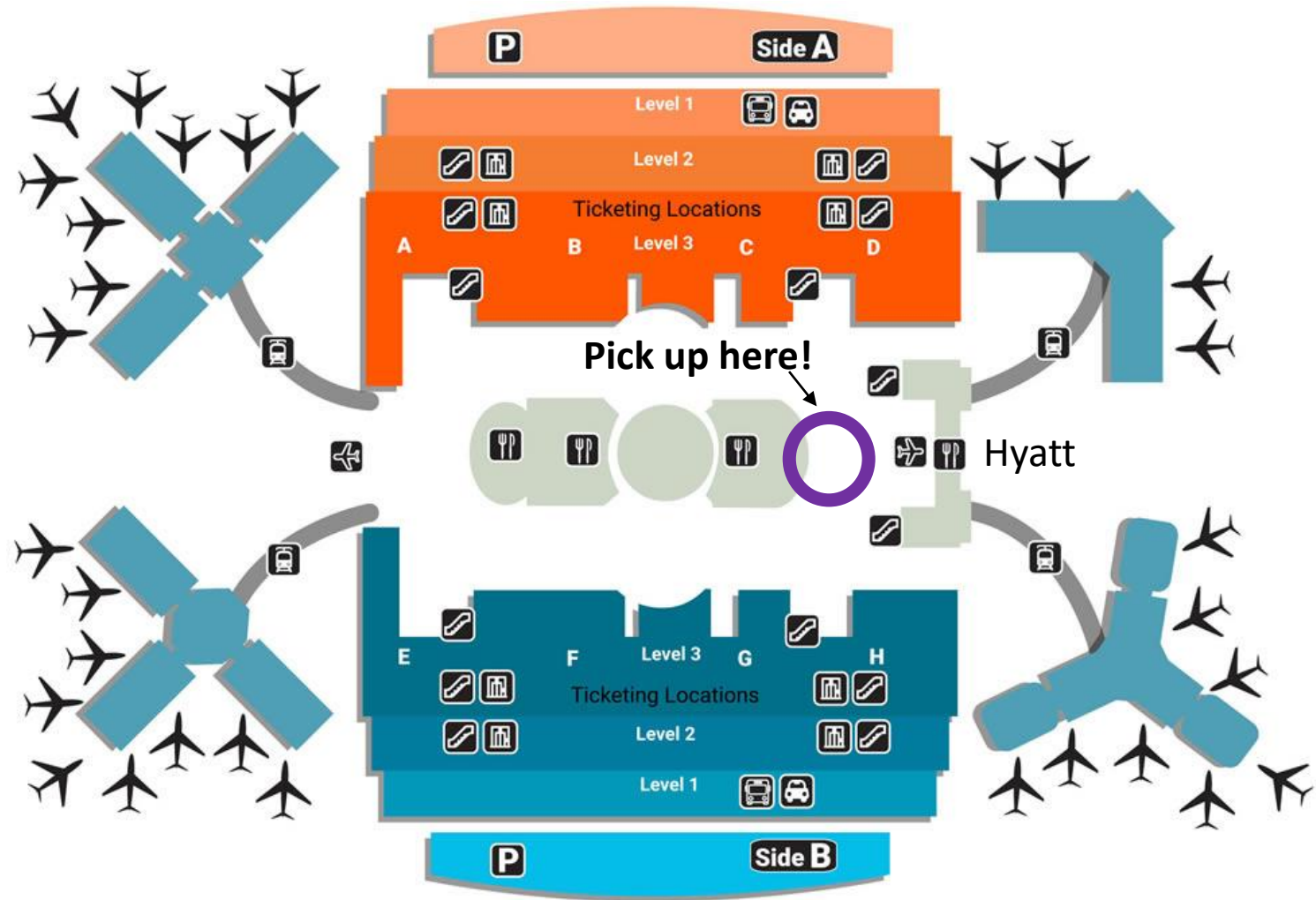
# January 2nd

Tuesday 2 <sup>nd</sup> January	7.00am	A full English buffet breakfast will be served in the Garden Suite. HALF DAY TOUR OF THE TOWER OF LONDON and RIVER THAMES.
	8.30am	Join your Blue Badge guide and walk to the Tower of London for a half day tour.
	9.00am	Arrive at the TOWER OF LONDON, where your guide will give you a tour of the palace, including entrance to the Crown Jewels and the White Tower.
	10.45am	Walk to Tower Bridge Quay and board your motor cruiser to Westminster Pier.
	11.00pm	The cruise will include a panoramic tour downstream to Tower Bridge, then upstream to the Palace of Westminster.
	12.00pm	Disembark at Westminster Pier and lunch at leisure.
	2.00pm	<b>Optional activity.</b> Depart by underground to Tottenham Court Road, the starting point of the <b>LONDON, ROCK &amp; ROLL CAPITAL OF THE WORLD</b> audio walk, which delves in to the local history of the Beatles, Rolling Stones, the Swinging Sixties, Glam Rock, Punk Rock, Brit Pop and much more. At the end of your walk, return by underground to your hotel.
	5.00pm	Dinner served in the Garden Suite in your <b>HOTEL</b> .
	6.30pm	Depart by coach to Cadogan Hall.
	7.30pm	Take your seats for the <b>London International Choral Festival Gala Concert</b> .
	7.45pm	Concert begins.
	9.00pm	Return by coach to your hotel.
	10pm	Bed Check

# January 3<sup>rd</sup>

Wednesday 3 <sup>rd</sup> January	6.00am	A full English buffet breakfast will be served in the Garden Suite. Bring Luggage Down!!!! Everyone in Meeting area checked out of room by 6:45am
	7.00am	147 passengers on the BA2037 depart by coach for Gatwick South Terminal
	7.15am	36 passengers on the AA0733 depart by coach for Heathrow T3.
	8.30am	Check-in for the BA2037 to Orlando departing at 11.25am.
	8.30am	Check-in for the AA0733 to Charlotte Douglas departing at 11.50am. Your 1 'land only' passengers will make their own way to the airport.
PICK UP WILL BE AT THE SAME LOCATION AS MEETING PLACE AT ORLANDO INTERNATIONAL AIRPORT		

Location of  
Pick up  
Level 3





# January 3<sup>rd</sup>

## Continued

### Wear

Students are to wear their Grey hoodie sweatshirt and stay with assigned chaperone while in the airport to boarding.

### Passports


All passports will be handed out to the students from their chaperone once they arrive at the airport

### Food

lunch and afternoon tea will be served on the plane

# Chaperone Group Assignments

Every student has been assigned to 1 of 15  
Primary chaperones



That chaperone is responsible for the  
following

Getting those  
students through  
the airport

Checking those  
rooms of the  
students each  
night at bed  
check

Being the  
emergency  
contact for each  
student

Making sure they  
know the  
whereabouts and  
with whom their  
students are  
with.

To communicate  
with Mr. K  
directly with any  
questions or  
concerns

To be the first  
point of contact  
for students and  
other parents

Chaperone  
assignments are  
attached to your  
handouts and  
posted on The  
London Band App



You will receive  
walks, which  
unstructured  
be sent to you  
onto your ele  
arrive in Lond

## LNYDP INFORMATION | 17

# PARADE ROUTE



## Parade Route Walk:

- **Begins in front of The Ritz**
- **Progresses along Piccadilly**
- **To Trafalgar Square**
- **Along Whitehall, finishing in Parliament Square.**

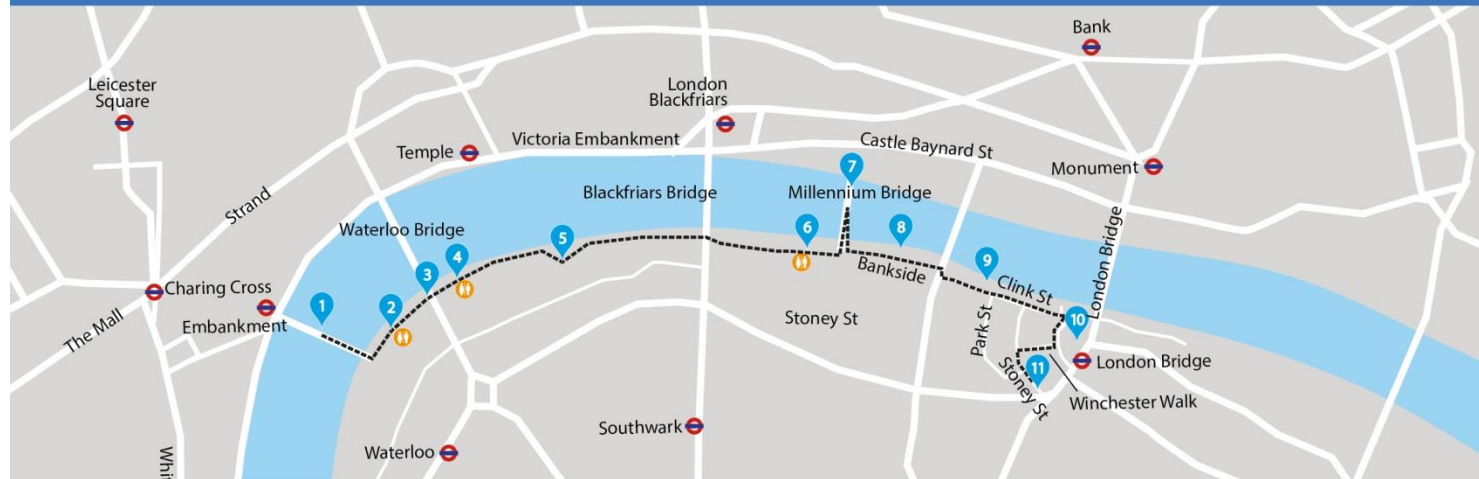


# SOUTHBANK STROLL



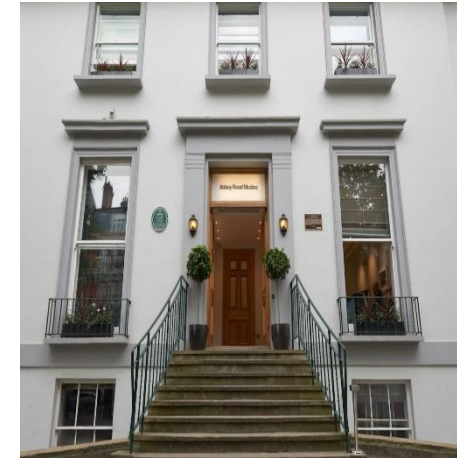
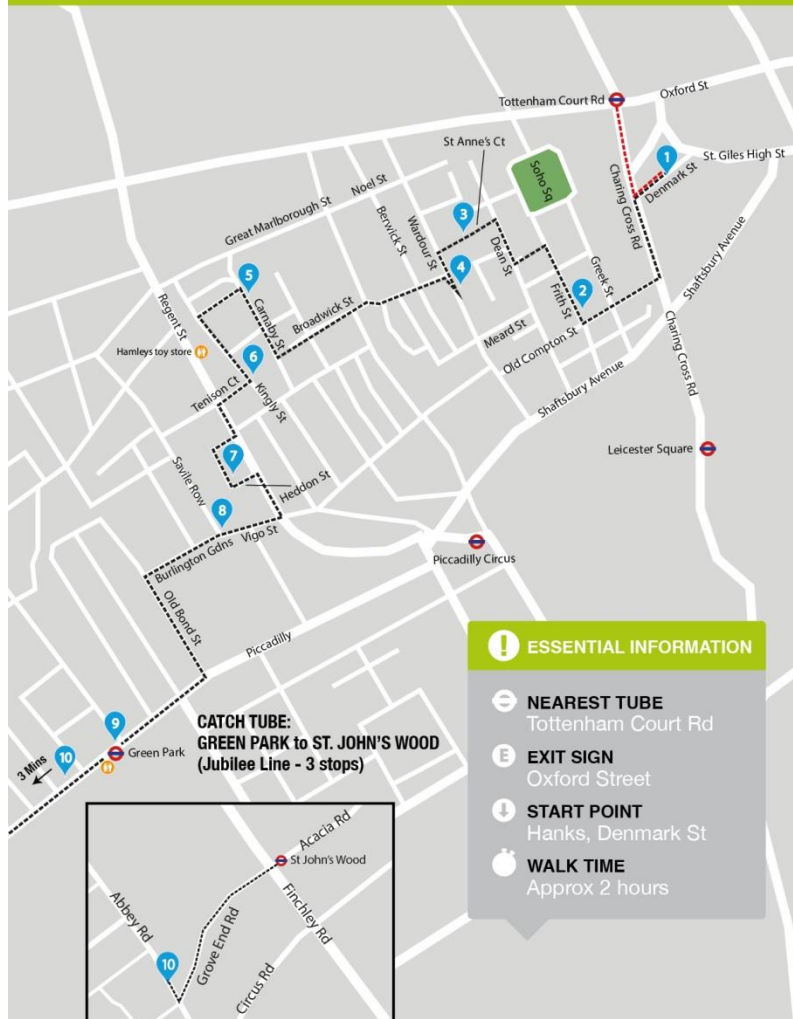
## Riverside Ramble - The South Bank Walk

## Directions



# LONDON, ROCK AND ROLL CAPITAL OF THE WORLD

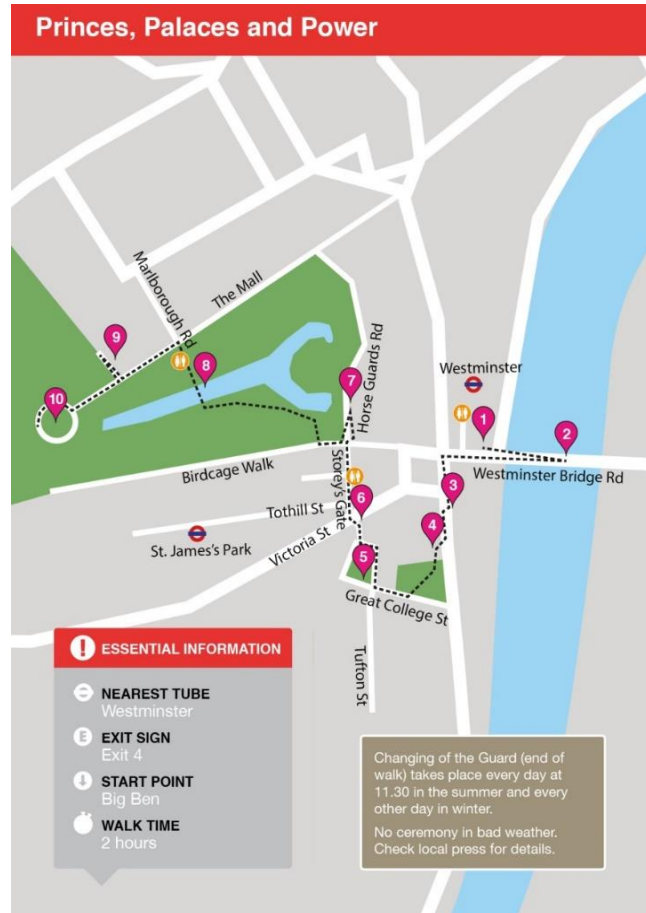
## London, Rock and Roll Capital of the World





# WALKING TOURS

## Princes, Palaces and Power (not audio guided)



### Guide and Seek

#### So how does this work?

Use the dotted line on the Clue Map to guide yourself from stop to stop where you'll find a clue. Each clue has a one letter answer. Write it in the appropriate place in the Codex Grid on the map. Have a look at the Codex Grid.

By the end of the Guide and Seek trail you'll have two complete words in the grid which will spell out a mega important London resident!

Let's get going and you'll soon pick it up. Oh, and one more thing...

Good Luck!

#### Essential Information:

- Nearest Tube: Tottenham Court Road
- Exit sign: Oxford Street
- Start point: Soho Square, in centre
- Walk time: 3 hours

Never walk and look at the Clue-Map at the same time. Always look where you're going and be aware of your surroundings! London's a busy place so always cross roads at pedestrian crossings using the lights you'll find there. Have fun!

#### THE CODEX GRID

C12	C8	C7	C5	C6	C3
C10	C4	C2	C11	C1	C9

**Guide and Seek:**  
Follow the route from Tottenham Court Road to Westminster and collect the answers using the clues provided.

# UNSTRUCTURED TIME

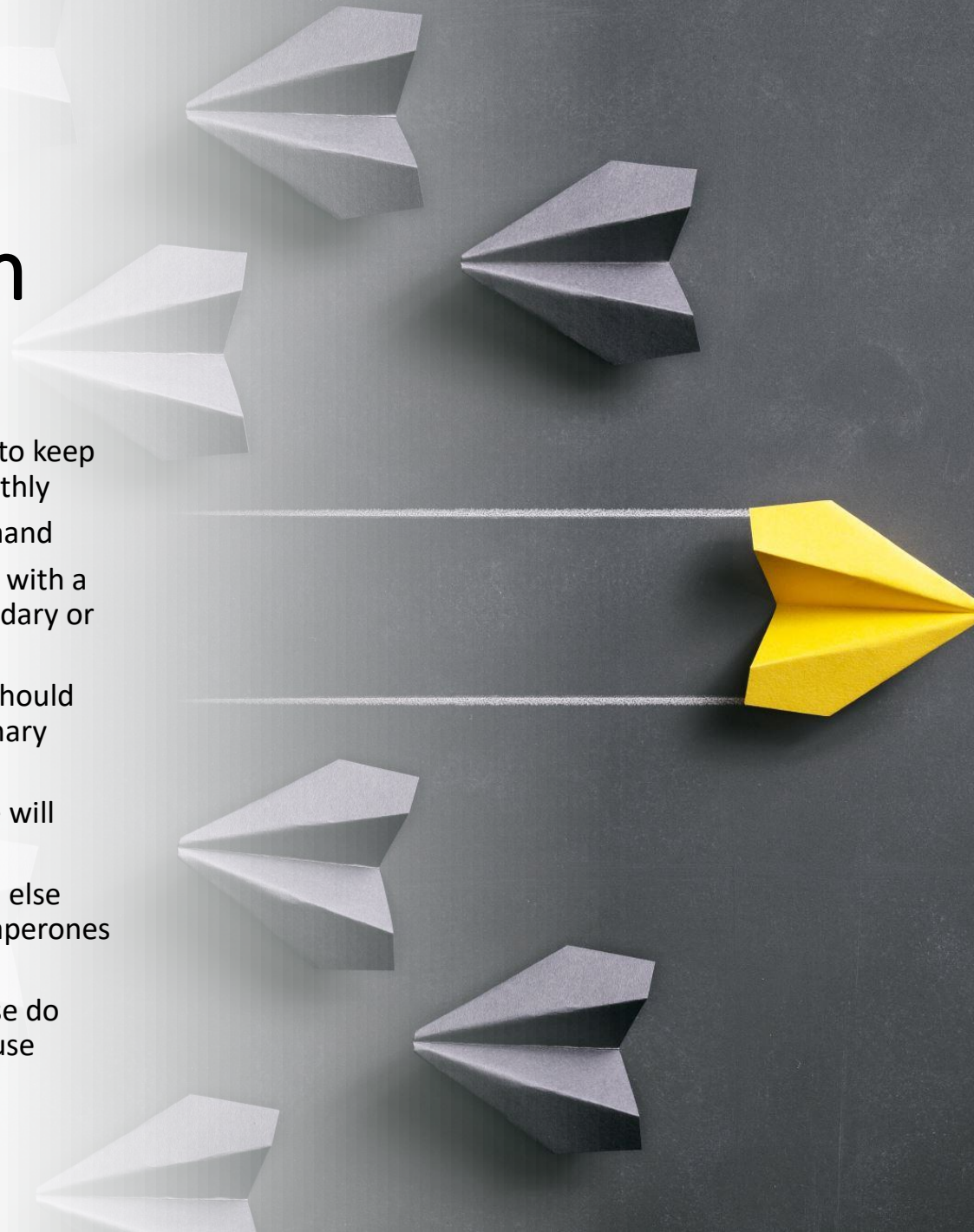
**Here are a few ideas of things you can do in your unstructured time**

- **Museums (all free entry)**
  - **Science Museum**
  - **Natural History Museum**
  - **Victoria & Albert**
  - **British Museum**
  - **Imperial War Museum**
  - **Design Museum**
  - **Museum of London**
- **Walking Tours**
  - **Guide and Seek**
  - **Princes, Palaces and Power**
- **Markets**
  - **Portobello Road**
  - **Borough Market**
  - **Old Spitalfield**
  - **Winter Wonderland**
  - **Southbank**
- **Art Galleries (all free entry)**
  - **National Gallery**
  - **Tate Modern/Tate Britain**
  - **Saatchi Gallery**
  - **Hay's Galleria**



# Chain of Communication

- Chain of command is vitally important to keep the entire group and trip moving smoothly
  - Please follow this chain of command
    1. Students should enquire with a chaperone (either Secondary or Primary)
    2. Secondary Chaperones should then enquire with a Primary chaperone first
    3. Then Primary chaperone will communicate with Mr. K
  - Do not get answers from anyone else except Secondary or Primary chaperones or Mr. K
  - Follow chain of command...please do not break the chain...this can cause confusion and frustration





# Weather

- Dress warm
  - Long pants
  - Gloves
  - Heavy jacket and one light jacket
  - Good shoes to keep feet warm (we will be walking everywhere)...no sandals...no crocks!
  - Extra socks!

THU DEC 27		Partly Cloudy	48°/42°	20%	SW 7 mph	84%
FRI DEC 28		AM Showers	47°/41°	40%	SSW 8 mph	87%
SAT DEC 29		Partly Cloudy	47°/43°	10%	SW 10 mph	87%
SUN DEC 30		Partly Cloudy	48°/43°	10%	SW 10 mph	83%
MON DEC 31		Partly Cloudy	48°/42°	10%	SW 12 mph	86%
TUE JAN 1		Partly Cloudy	48°/42°	10%	SW 11 mph	82%
TUE JAN 1		Partly Cloudy	48°/42°	10%	SW 11 mph	82%
		UV INDEX	SUNRISE	SUNSET	MOONRISE	MOONSET
		0 of 10	8:06 am	4:01 pm	3:10 am	1:22 pm
		Intervals of clouds and sunshine. High 48F. Winds SW at 10 to 15 mph.				
TUE NIGHT JAN 1		Partly Cloudy	--/42°	20%	WSW 10 mph	87%
		UV INDEX	SUNRISE	SUNSET	MOONRISE	MOONSET
		0 of 10	8:06 am	4:01 pm	3:10 am	1:22 pm
		A few clouds. Low 42F. Winds WSW at 10 to 15 mph.				



# PACKING

- What clothes to pack?
  - DINKLES
  - Marching Band Shoes
  - Marching Band GLOVES
- Temperature in London at New Year
  - Average Low 37F
  - Average High 48F
- Layers are the answer
  - T-shirt.
  - Sweatshirt.
  - Light waterproof jacket.
  - Jeans
- Comfortable walking shoes.
- NYE party clothes and Dress Clothes for going to Concert to Cadogan Hall.



# ELECTRICAL DEVICES

- Electrical current in England = 220 - 240 volts (US 110 Volts).
- Electrical sockets (outlets) in London require a three pin plug so you will need a converter.
- Most hotels have USB sockets for charging devices, so adaptors are not required. You may also find USB sockets in coaches and cafes.



# PACKING

- You are away for just one week – don't over do it!!!
- One check-in bag free– 50lbs in weight and total dimensions 62 inches. Airlines vary, so double check on-line.
- One carry on and a purse or laptop bag.
- You may have to take your small instrument as a carry on or in your checked suitcase.

# Medications



ANY PRESCRIBED CONTROLLED MEDICATIONS SHOULD BE GIVEN TO YOUR CHAPERONE ONCE WE ARRIVE IN LONDON AND THE PROPER DOCUMENTATION MUST BE FILLED OUT PRIOR TO YOU LEAVING. ONLY IF YOU ARE TAKING THESE MEDS!!!!!!!!!!



TAKE ONLY WHAT YOU NEED IN THE ORIGINAL PRESCRIPTION BOTTLE AND PUT IN YOUR CHECKED LUGGAGE...NOT YOUR CARRY ON!!!!!!!!!!!!!!



# Medications continued

- If you are taking prescription medications and your parent is going...I need to know nothing! And you need to do nothing.
- If you are taking prescribed medications that ***are not controlled substances*** and your parent is not going...fill out the medication form and turn into me tonight.
- If you are taking prescribed medications that ***are controlled substances*** and your parent is not going....fill out the form, turn into me by tonight, **PACK IT IN YOUR CHECKED LUGGAGE** and give medication **in the original prescription bottle when we arrive to the hotel in London to Stephanie Demar** (she is a Registered Nurse) and she is permitted to administer your medication when needed.

# How to stay in Touch

- Facebook
- UHS London Band App
- Hotel has Wifi
  - Face Time
  - Facebook Messenger
  - Whats App
- Check your cell Plan





# Emergency Plan

- In the event of an emergency...please follow directions of the staff/officials of the location we are visiting. Parade, Sites, Hotel, Airport etc.
1. Students should locate and contact their assigned chaperone ASAP.
  2. Each Primary Chaperone will then check in with Mr. K...Chaperone giving an account and location of their group or students and give an update
  3. Primary Chaperones will check in every 30 minutes to Mr. K until all students are accounted for or are all back to Hotel or a specified meeting area.
  4. All information and directives will come from Mr. K who will receive information directly from officials.
  5. If the students are with a different chaperones at the time of emergency, then those chaperones will be required to check in with each one of the student's assigned chaperones and get entire group to meeting location or hotel as quickly and safely as possible. That chaperone will be required to check in every 30 minutes until all students are physically with their assigned chaperones at the meeting location or hotel.
  6. Mr K will give updates as information becomes clear.

# Money

- Pre-Paid Visa Card with International plan to avoid charges
- Cash...go to bank and exchange here
- Cash...exchange at airport for a fee
- Debit Card with international plan NOT connected to your checking account
- How Much
  - Each performer will have 100 pounds on their food card.  
Souvenirs and some Sight Seeing
  - \$90-200 it is up to you



01

All Volusia county schools,  
Florida and united states  
laws apply

02

Any violation of school  
rules or American laws  
being broken may result in  
the student being sent  
home immediately at the  
expense of their parents.

03

If that student's parent is  
on the trip this may result  
in both student and parent  
being sent home at their  
own expense.

04

Other repercussions may  
be: student being confined  
to the hotel and may not  
be allowed to participate in  
any events for the  
remainder of the trip.

05

Adults – all adults are  
considered chaperones on  
this trip. Being a  
chaperone, you are always  
expected to conduct  
yourself as a Volusia county  
volunteer...you are always  
on duty!

# Code of conduct